

GENERAL NOTES

TYPE OF REGULATOR

Hydraulic Regulator Model

690-01 Reduced Port Determined by NKWD
 90-01 Full Port CALVAL

Regulator to be capable of reducing pressure to a range between 75 - 150 psi

Accessories for Hydraulic Regulator

Stainless Steel Seats with o-ring

X101-Site Tube Part used to identify if valve is opened or closed w/ Rising Stem

Valve with Speed Control - To Be Determined by NKWD Stops Water Hammer

Pressure Gauge - installed on low flow pipe between isolation valve and outlet of pressure control of P.R.V. This should consist of isolation ball valve to pressure gauge and a pressure bleed off.

Low Flow 2"

2" Low Flow- Shall have unions installed for easy removal of small regulator-Regulator can be the same as District keeps in stock

2" shall be tapped with Brass Saddle and shall be Type K copper
 2" shall have Ball valves installed

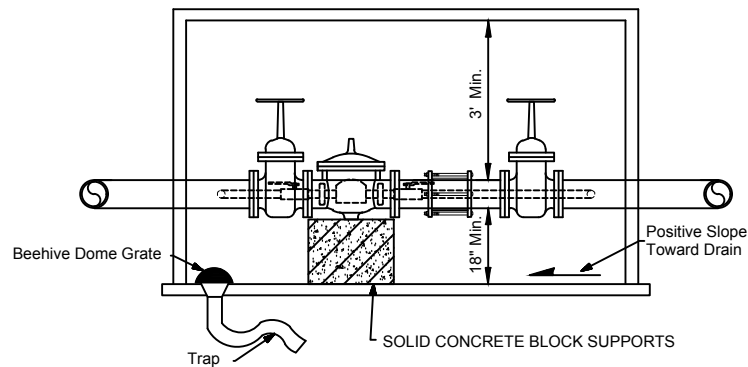
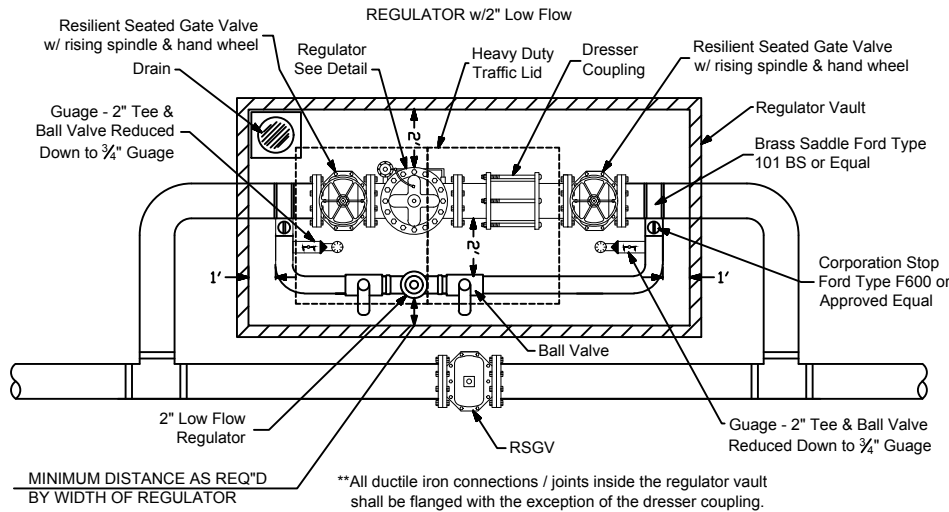
Regulator Vault

Refer to drawing #202 for the Meter Vault and Drain.

Paint

All piping, valves, and fittings inside the vault shall be painted with the exception of copper, brass, and stainless steel.

Preparation: Near-white blast cleaning or factory primed.
 One coat epoxy primer.
 One Coat Polyurethane enamel (blue).



	BY	DATE				
REVISION						
N. KY. WATER DISTRICT	REGULATOR VAULTS WITH 2" LOW FLOW					
DRAWN BY:	SAR					
APPROVED:	<i>[Signature]</i>					
DATE:	2/1/2021					
STANDARD DRAWING NO:	210					