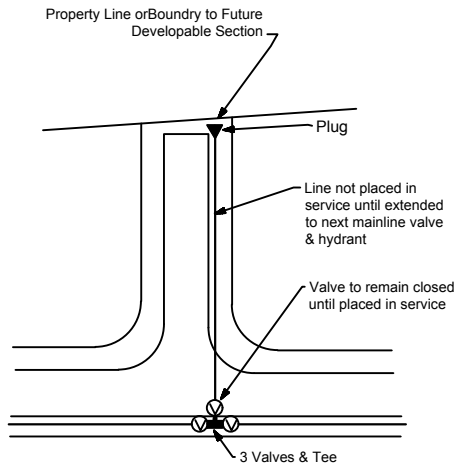
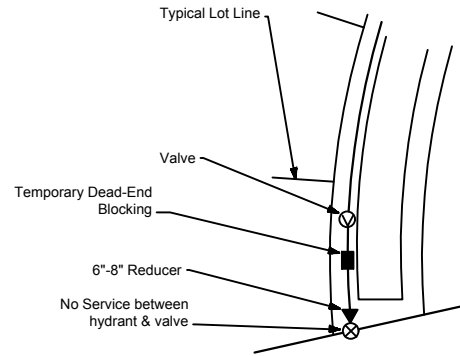


FUTURE SIDE STREET WITH SERVICE ON BRANCH LINE

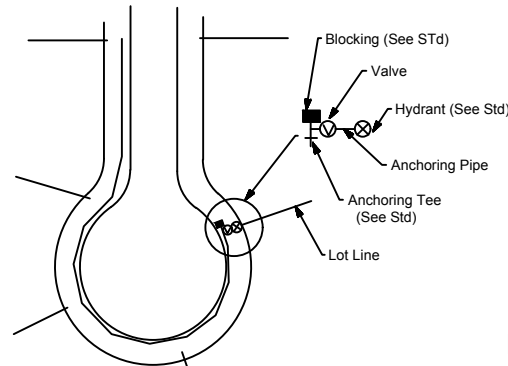


FUTURE SIDE STREET WITHOUT SERVICES ON BRANCH LINE

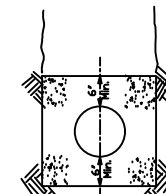
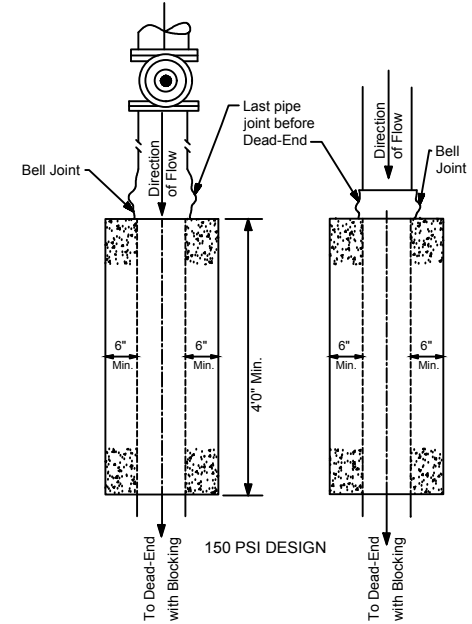
Water Mains under paved surface shall not exceed maximum 30 lin.Ft., this does not apply to streer intersections.



DEAD-END STREET WITH PROPOSED FUTURE EXTENSION



CUL-DE-SAC WITH DEAD-END FIRE HYDRANT



Blocking shall be Class "A" Concrete or Flowable Fill as approved by the District.

DETAIL FOR TEMPORARY DEAD-END BLOCKING

NOTE: Blocking shall be inspected by the District prior to backfilling.

REVISION	BY	DATE
1.	JMPS	11/15/23
	JMPS	8/22/24

N. K.Y. WATER DISTRICT
WATER MAINS TERMINATIONS

DRAWN BY: SAR

APPROVED: *[Signature]*

DATE: 2/1/2021

STANDARD DRAWING NO:

101