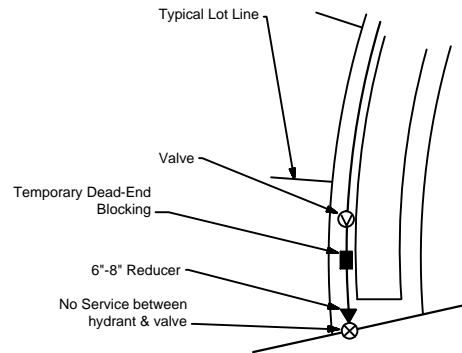
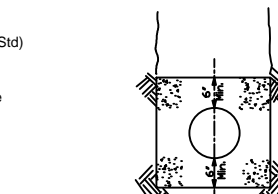
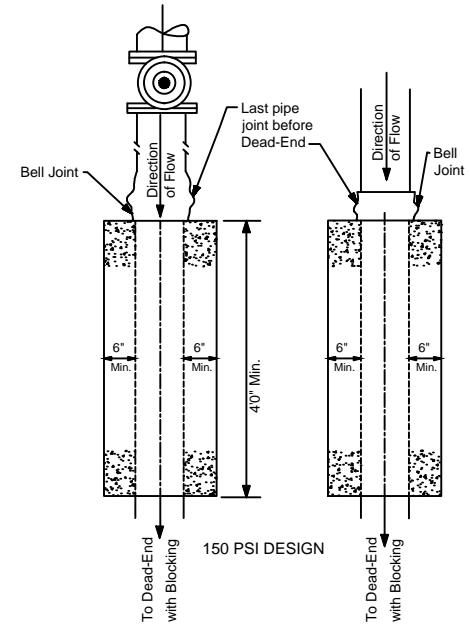


**FUTURE SIDE STREET WITH SERVICE ON BRANCH LINE**

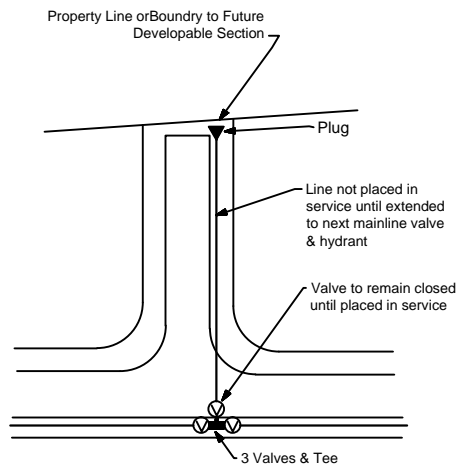


**DEAD-END STREET WITH PROPOSED FUTURE EXTENSION**



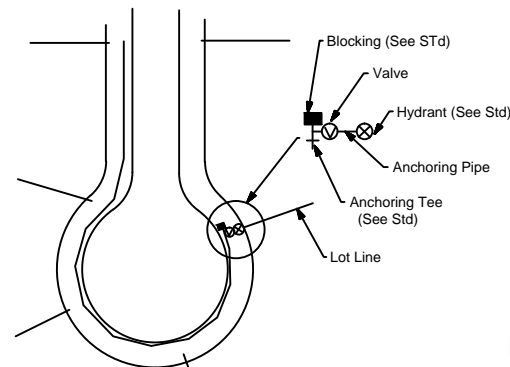
**DETAIL FOR TEMPORARY DEAD-END BLOCKING**

NOTE: Blocking shall be inspected by the District prior to backfilling.



**FUTURE SIDE STREET WITHOUT SERVICES ON BRANCH LINE**

Water Mains under paved surface shall not exceed maximum 30 lin.Ft., this does not apply to streer intersections.



**CUL-DE-SAC WITH DEAD-END FIRE HYDRANT**

| REVISION | BY  | DATE     |
|----------|-----|----------|
| 1.       | MPS | 11/15/13 |
|          | MPS | 02/23/14 |

the 30' under paved surface for installation  
Detail temp. dead-end blocking

**N. KY. WATER DISTRICT**

**WATER MAINS TERMINATIONS**

DRAWN BY: SAR

APPROVED: RH

DATE: 8/5/2014

STANDARD DRAWING NO: 101